

Planetary Science R&A Program Update

Michael New, PhD

Planetary Sciences Subcommittee Meeting

Washington, DC

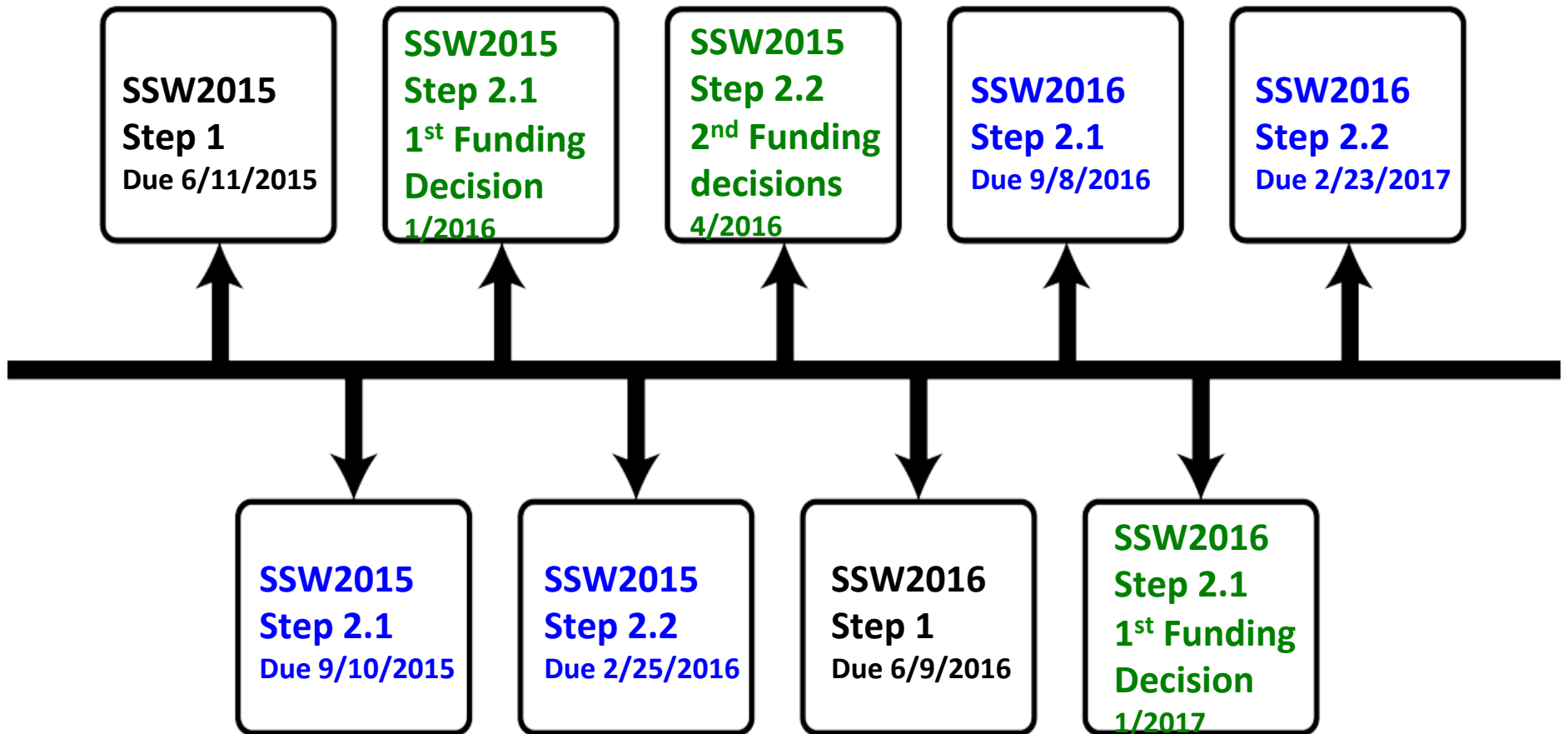
October 5-6 2015

PSD R&A ROSES 15 Deadlines

Program Name	Step-1 Due Date	Step-2 Due Date
Exoplanets (XRP)	<i>03/27/2015</i>	<i>05/22/2015</i>
Emerging Worlds (EW)	<i>03/31/2015</i>	<i>06/05/2015</i>
Exobiology (EXOB)	<i>05/22/2015</i>	<i>07/24/2015</i>
Solar System Obs. (SSO)	<i>04/10/2015</i>	<i>06/12/2015</i>
Laboratory Analysis of Returned Sample (LARS)	<i>04/24/2015</i>	<i>06/26/2015</i>
Planetary Data Archiving, Resto, Tools (PDART)	<i>05/15/2015</i>	<i>07/17/2015</i>
Cassini Data Analysis (CDAPS)	<i>06/01/2015</i>	<i>08/18/2015</i>
Solar System Workings (SSW)	<i>06/11/2015</i>	<i>09/10/2015</i> 02/25/2016
Planetary Sci./Tech. Throu Analog Research (PSTAR)	<i>07/24/2015</i>	<i>09/25/2015</i>
Mars Data Analysis (MDAP)	<i>08/28/2015</i>	<i>10/02/2015</i>
Lunar Data Analysis (LDAP)	<i>08/28/2015</i>	10/30/2015
Discovery Data Analysis (DDAP)	<i>09/10/2015</i>	11/20/2015
PICASSO	<i>09/14/2015</i>	11/13/2015
Habitable Worlds (HW)	11/20/2015	01/22/2016

Timeline for SSW

Single Step 1 per year
Two Step 2 deadlines



Panels in Multi-Disciplinary Programs

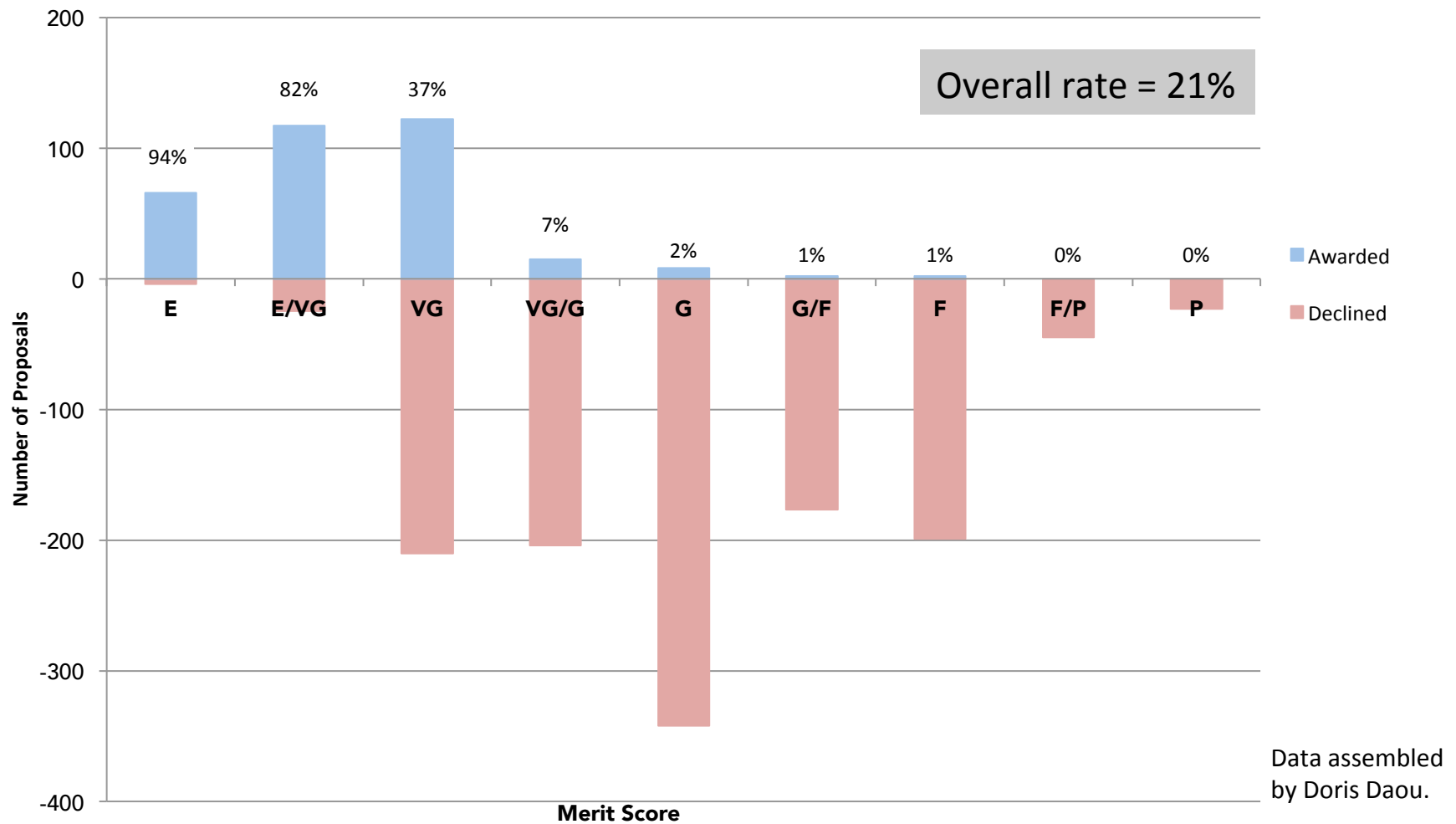
- One change is that many of the new R&A programs are much broader and more multi-disciplinary than older programs.
- While all (most?) programs create panels based on topics, or less frequently, techniques, due to the variation in proposals from year to year, in broad programs the nature of the sub-panels are likely to change.
 - So this year's "Geophysics" panel may become next year's "Interior Structure and Dynamics" panel.

Change in Proposal Numbers

Program	ROSES 2014 Step-1 Submissions	ROSES 2014 Step-2 Submissions	ROSES 2015 Step-1 Submissions	ROSES 2015 Step-2 Submissions	% Change Step-1 Submissions	% Change Step-2 Submissions
EW	219	159	169	137	-23	-14
SSW	509	384	477	123	-6	
EXOB	186	144	247	179	+33	+24
SSO	99	71	70*	51*	-29	-28
PDART	143	100	117	97	-18	-3
CDAPS	101	78	97	84	-4	+8
DDAP	32	27	50		+56	
LARS	29	24	22	18	-24	-25
XRP	168	134	137	112	-18	-16
MDAP	139	104	133	100	-4	-4
LDAP	82	51	71		-13	
PSTAR	69	46	68	48	-1	+4
HW	110	72				
MatISSE	55	44	<i>Not solicited this year.</i>	<i>Not solicited this year.</i>		
PICASSO	112	96	132		+18	

*NEOO proposals not solicited this year.

A Selection Metric



Shown are 1,561 proposals submitted to ROSES-2014, including all core programs (EW, SSW, HW, SSO, EXO) and all DAPs (MDAP, DDAP, LDAP, CDAPS).

Facilities Future Plans

Objective:

Ensure that NASA-funded, science-enabling research facilities support the needs of PSD R&A community

Plans:

- Gauge interest & community needs through RFI's
- Identify existing & future facility needs via LPSC session
- Summarize lessons learned from review of PSD-funded facilities

New Facilities

- Release a CAN to fund facilities that would answer the needs of the community
- Estimated release date in calendar year 2016

Current Facilities Lessons Learned

- Progress Report from all PSD Funded Facilities:
 - AVRГ, PAL & RELAB
- Each Facility will have 1 hour to present and 1 hour Q&A
- Presentation to the Panel :
 - ✓ Current Objectives and Accomplishments
 - ✓ Impact on Missions, Planetary Science, and Planetary Science Community
 - ✓ Management Plan
 - ✓ Unique Distinguishing Features
 - ✓ Usage of the Facilities (hours, groups..)
 - ✓ Lessons Learned
 - ✓ Publications List
- Panel will provide a summary with lessons learned, to PSD management
- Volunteers invited (SARA website)
<http://science.nasa.gov/researchers/volunteer-review-panels/facilities-program-progress-review/>
- Questions: doris.daou-1@nasa.gov.

Procedure for USGS mapping

- Contact the USGS Map Coordinator (currently Jim Skinner) to discuss the mapping project. This should be done as early as possible in the proposal process.
 - The USGS has a form letter that lists the map's technical specifications and affirms that the USGS is able to support the mapping effort.
 - This is purely a statement of technical support and does not constitute an endorsement of the proposal.
- In the proposal submission questions, indicate that a USGS geologic map would be published as part of the project.
- In the full (Step-2) proposal, the USGS letter of technical specifications must be included, as one would include a letter of support.
 - This letter does not remove the responsibility of the proposal to describe and justify the mapping effort within the 15-page main body.
 - Selection of a proposal is contingent upon the inclusion of this letter.
- The USGS will be notified by the Program Officer of selected proposals with a mapping component.

FY15 Research Budget by Funding Line

Program	Budget (\$M)
Planetary R&A (Competed activities)	155.0
Mars R&A (MDAP) (excluding CDP)	9.9
Outer Planets Research (CDAPS)	8.5
Discovery Research (excluding PSP's)	8.0
JRPE (SSERVI Nodes)	7.8
NEOO (Competed activities)	15.0
Total	204.2

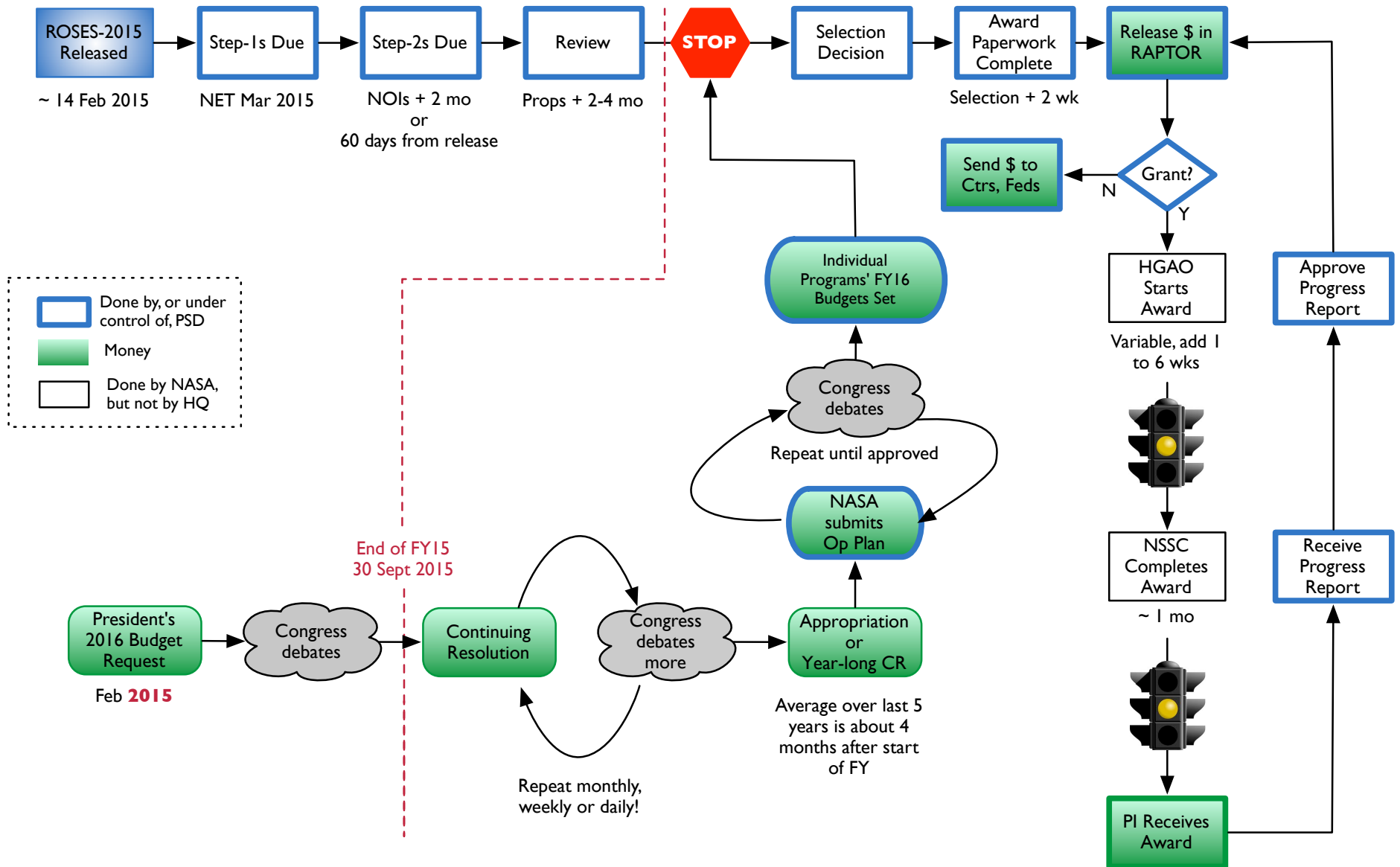
...and there's leveraging!

- Astrophysics Division provides ~\$1.5M to the NASA Astrobiology Institute.
- Astrophysics Division provides ~\$1M for XRP.
- Human Exploration and Operations Mission Directorate contributes \$4-5M to fund SSERVI.

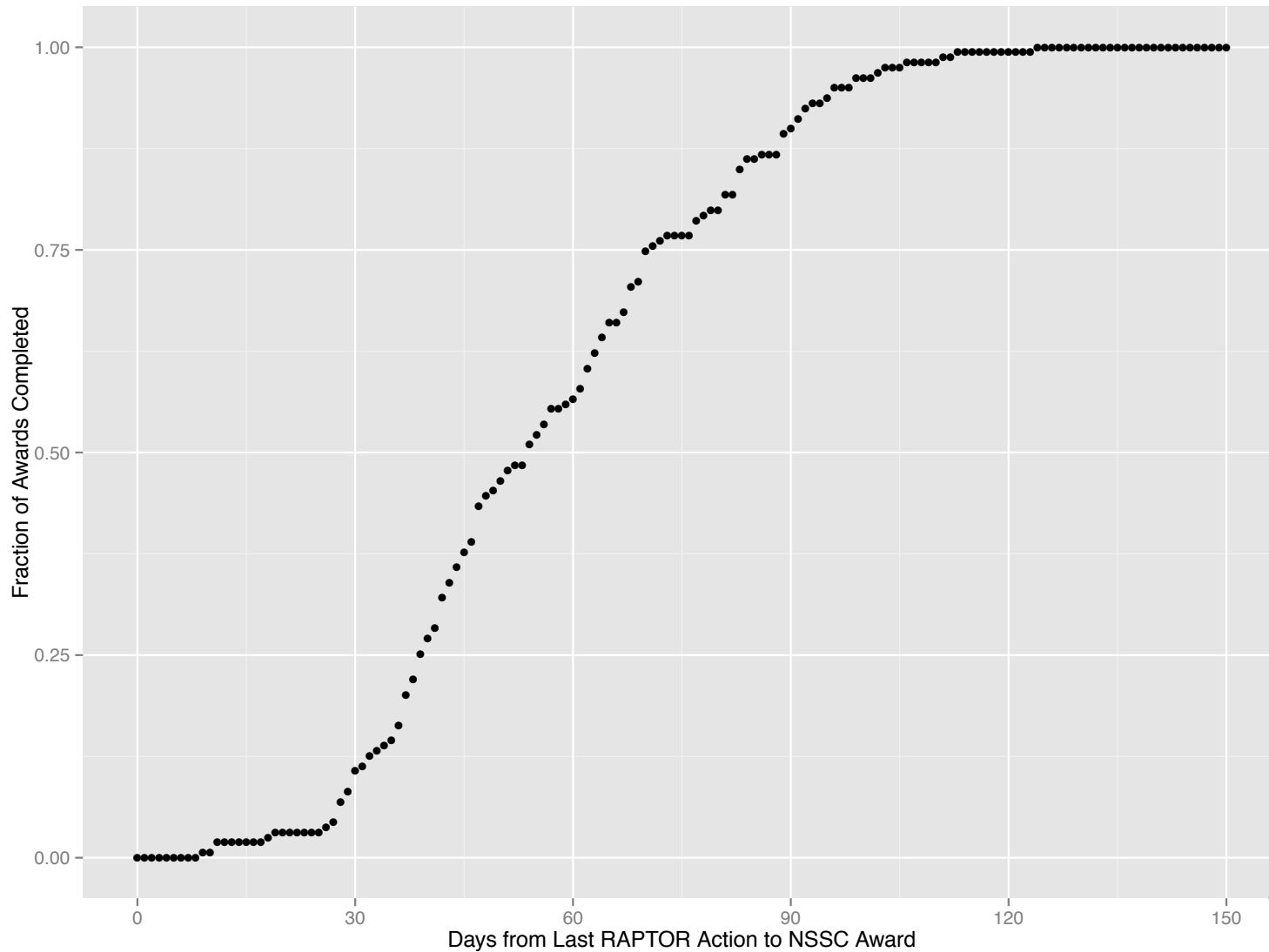
President's Budget Request for FY16

- FY16 Budget proposed to be nearly identical to FY15 for R&A
 - Planetary R&A (all activities) \$162.5M
 - Mars Data Analysis Program \$10M
 - Outer Planets R&A/CDAPS \$8.5M
 - Discovery Research grows to \$12.3M
 - SSERVI funded with JRPE money \$10M
- NEOO proposed to grow to \$50M in FY16
 - Not all of the \$50M, though, is for competed research.
 - NEO *will* solicit competed research in ROSES 2016 under Solar System Observations (SSO)
 - NEO will fund a portion of Spitzer in FY16
 - Plan to propose Planetary observations with Spitzer

Where's my money?



The speed of money (ROSES14)



Data and
analysis
provided by
Jared Leisner.

Conclusions

- FY16 Budget for R&A is expected to be similar to FY15, expectation of increase with inflation for out years
- Kicking off review of PSD-funded facilities with a plan to solicit new facilities in CY16
- Kicking off NRC/SSB review to examine the implementation of R&A restructuring
- Current effort ongoing to examine investments in R&A pre- & post-restructuring, complete insertion of keywords into all funded activities
- Don't forget Data Management Plans (DMP in the cover pages)

Ground Rules on Questions

- I cannot tell you anything about future budgets beyond what I already have.
 - The FY16 budget request is working its way through the normal Appropriations process and I cannot speculate on when or how that will turn out.
 - Remember, the President proposes but Congress disposes.
 - The President's FY17 budget request is still in the early stages of preparation and it will not be public before the first Monday in February 2016, so I cannot talk about that either.
- I cannot disclose anything about unselected proposals. The titles and abstracts of *selected* proposals are available through NSPIRES.
- I cannot disclose any pre-decisional information (*e.g.*, panel divisions, selection discussions) but I can answer questions about processes *in general*.

QUESTIONS?