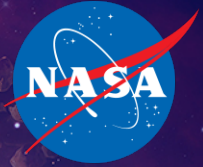


National Aeronautics and
Space Administration



EXPLORE SCIENCE

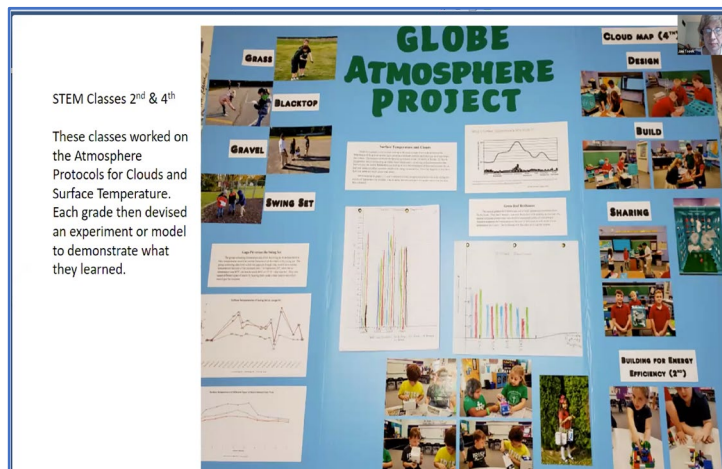
GME SATELLITES Student Conference Goes Virtual

Dr. Kevin Czajkowski
PI for GLOBE Mission Earth
05.19.2020

GME SATELLITES Student Conference Goes Virtual

17 Students and five teachers presented their GLOBE research work virtually on May 19, 2020 in the GLOBE Mission Earth (GME) Students And Teachers Exploring Local Landscapes to Interpret The Earth from Space (SATELLITES) Student Conference. Students who were able and allowed to present virtually did so. Teachers presented student projects for students who were not allowed to due to a school's policy of not allowing students to present using conferencing software. Research projects were connected to GLOBE campaigns & NASA missions such as IceSat2, Trees Around the World, AREN project, Clouds and Urban Heat Island Effect-Surface Temperature Field Campaign. The University of Toledo has hosted a student conference for over 15 years until COVID-19 made it virtual. Check out the listing of the presentations on our Facebook Page:

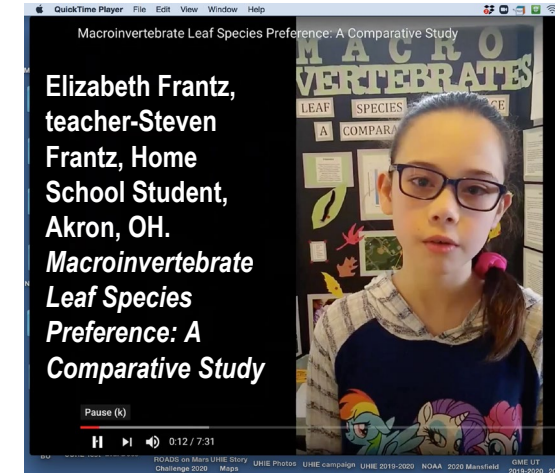
<https://www.facebook.com/globemissionearth>



Jani Tisovic-St. Patrick Elementary School, Bryan, OH



Kayli Bergman, teacher- Marcy Burns, Main Street Intermediate School, Norwalk, OH. Does elevation affect snowfall?



Using Aeropod Technology to Interpret Select Microscale Weather Parameters Using Vertical Profiling

Crestwood High School – Dearborn Heights, Michigan



Nazih Baydoun, Hassan Berry & Belal Beydoun. Teacher- Diana Johns, Crestwood High School, Dearborn Heights, MI. *Using Aeropod Technology to Interpret Select Microscale Weather Parameters Using Vertical Profiling*