



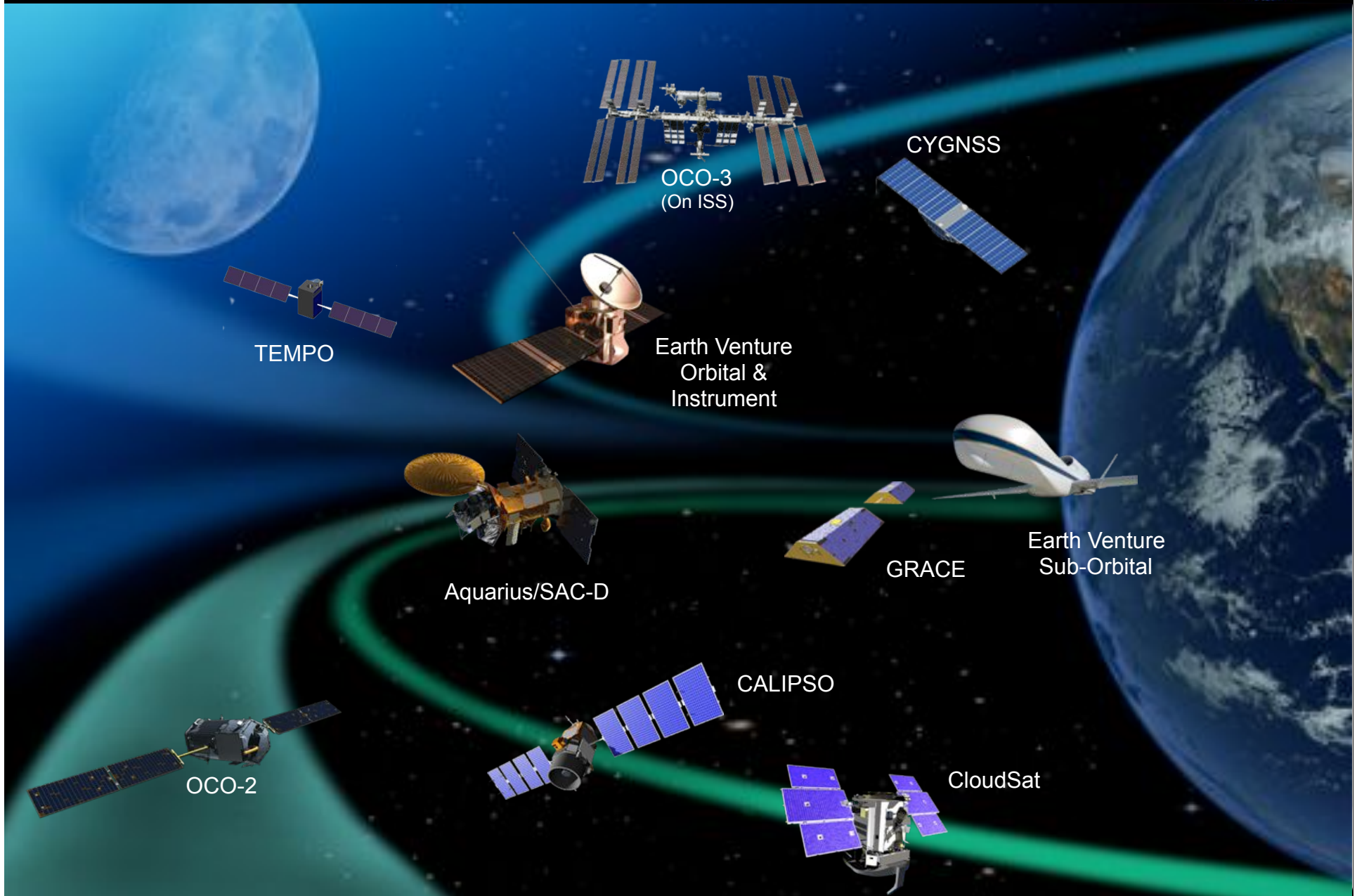
**Earth System Science Pathfinder  
(ESSP)  
Program Office**

**Overview**

Frank Peri  
Program Manager



# ESSP Program Portfolio



TEMPO

OCO-3  
(On ISS)

CYGNSS

Earth Venture  
Orbital &  
Instrument

Aquarius/SAC-D

GRACE

Earth Venture  
Sub-Orbital

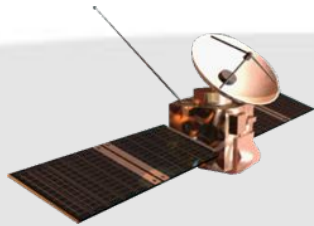
CALIPSO

OCO-2

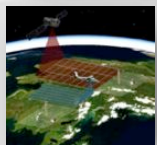
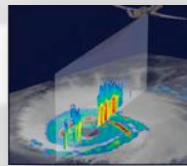
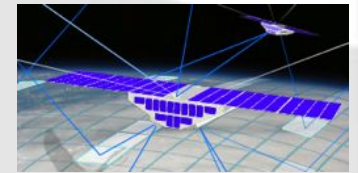
CloudSat



# Earth Venture



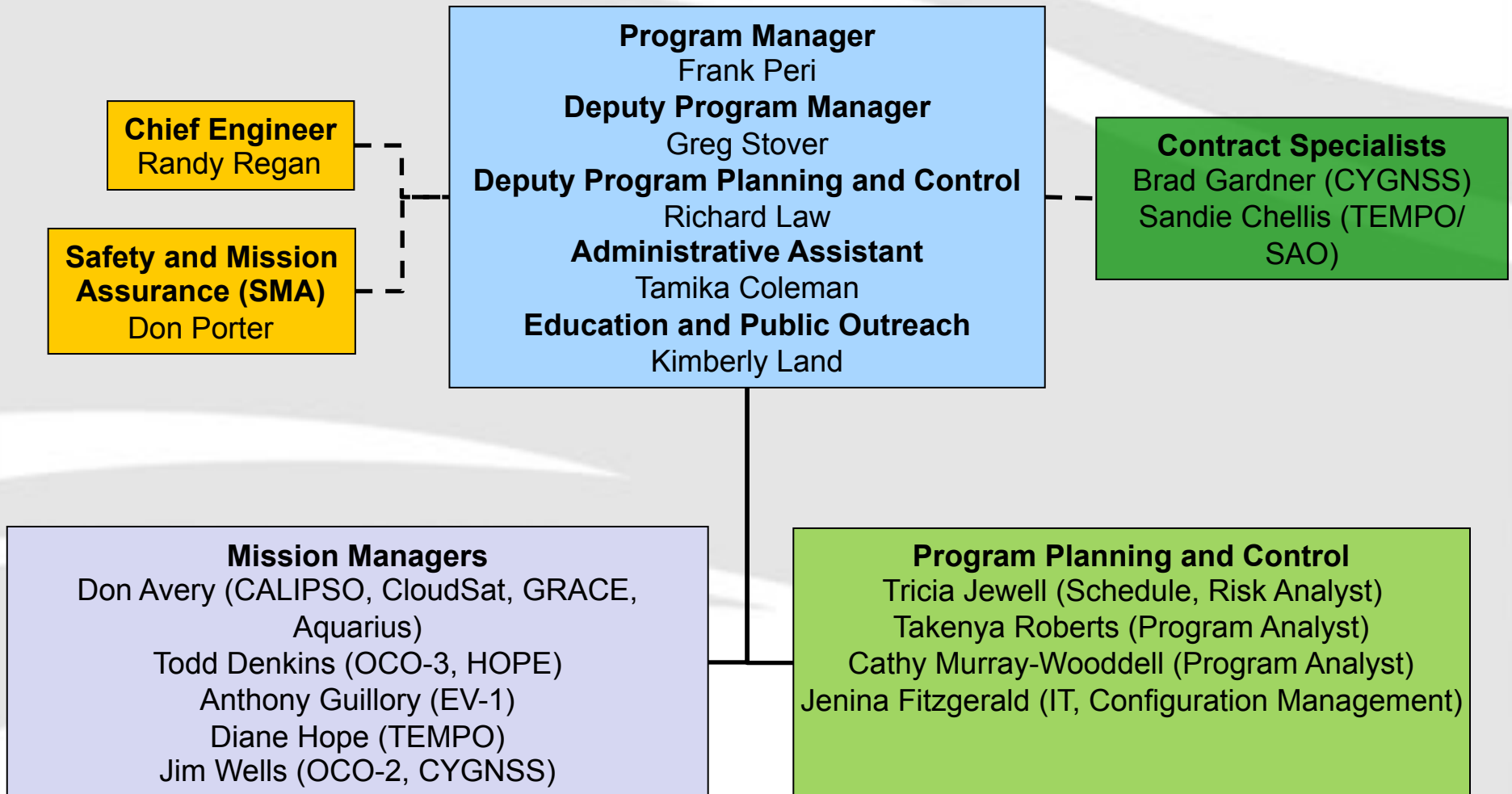
- Yearly calls as recommended by the NRC decadal survey
- AO driven, competitively selected, PI-led projects open to all earth science themes
- Mix of sub-orbital, instrument and orbital mission opportunities
- First Earth Venture (EV-1) call for airborne campaigns selected 5 investigations in spring 2010
- The second call, EV-2, for Class D spaceflight mission, selected CYGNSS in June 2012
- The third call, Earth Venture Instrument-1 (EVI-1), selected TEMPO in November 2012



“These missions should focus on fostering revolutionary innovation and on training future leaders of space-based Earth science and applications.”  
Decadal Survey, 2007



# Program Office Organization



-- Matrixed to ESSP



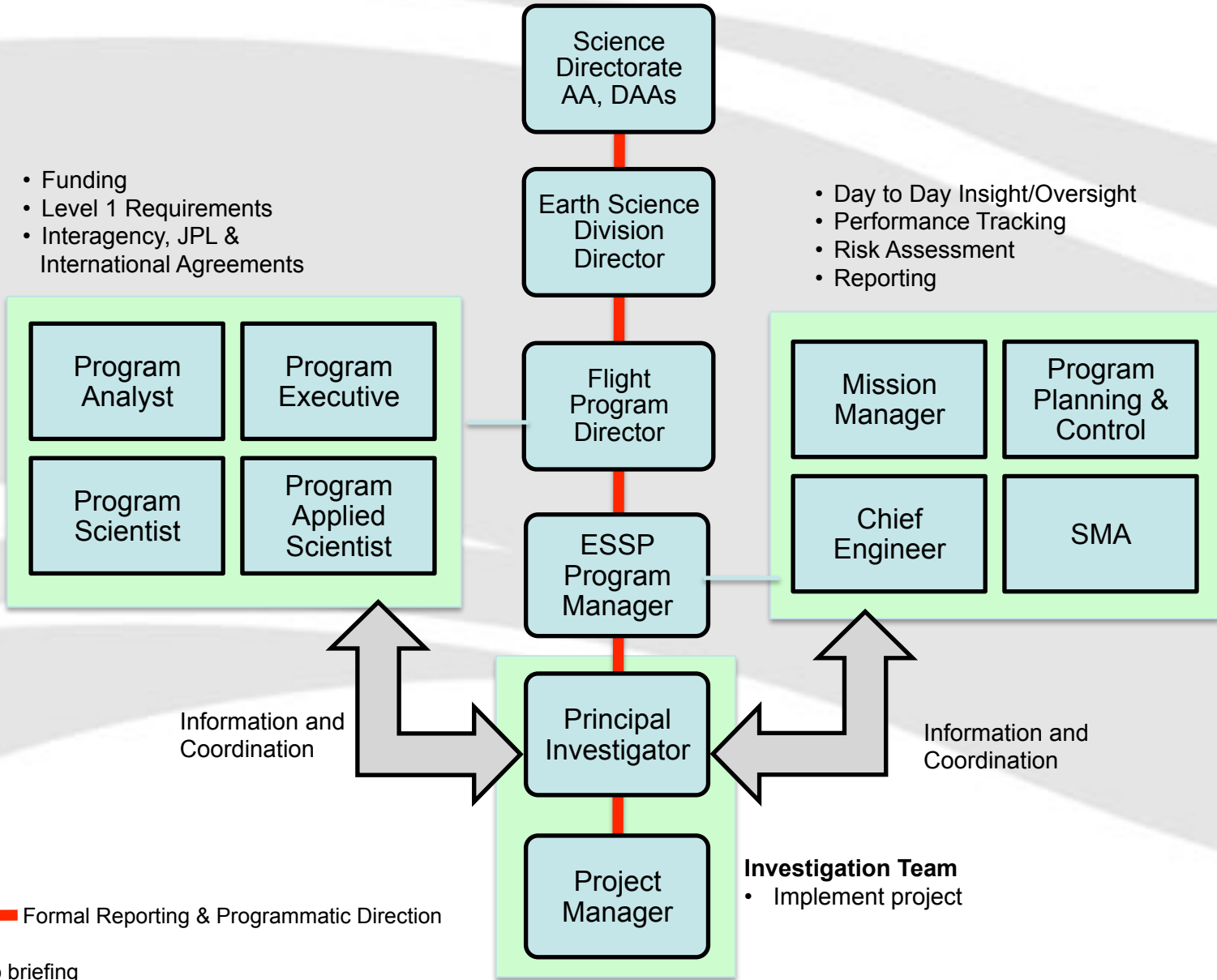


# Lines of Authority and Communications



- Funding
- Level 1 Requirements
- Interagency, JPL & International Agreements

- Day to Day Insight/Oversight
- Performance Tracking
- Risk Assessment
- Reporting



— Formal Reporting & Programmatic Direction

**Investigation Team**  
• Implement project



# Principles of NASA Oversight



- Principal Investigator is wholly responsible for accomplishing the proposed instrument and science objectives
  - Technical implementation and management approach drives the risk posture and likelihood of success
  - Trade space includes elements such as performance margins, quality assurance, and reliability within committed cost and schedule
- NASA is required to perform well defined oversight to ensure project is performing to contracted standards
- Development activities meet the requirements of NPR (7120.5E or 7120.8 as appropriate), NPR 7123, etc; may use developer defined equivalent processes
- Standard NASA policy and processes are used to evaluate PI management processes