

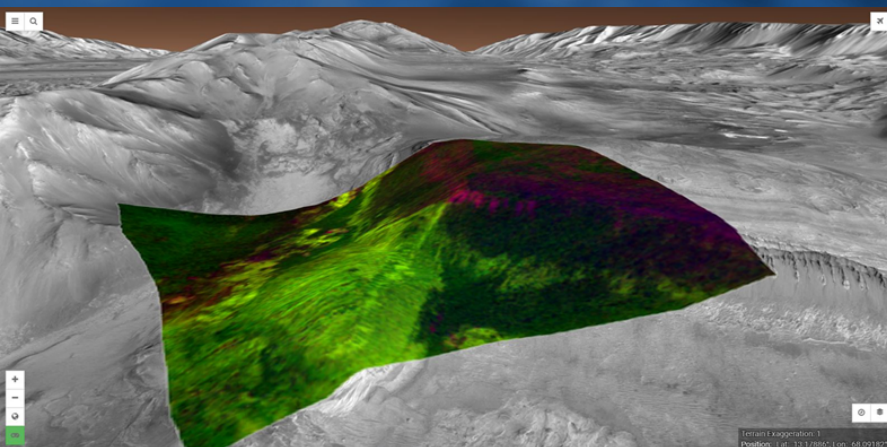
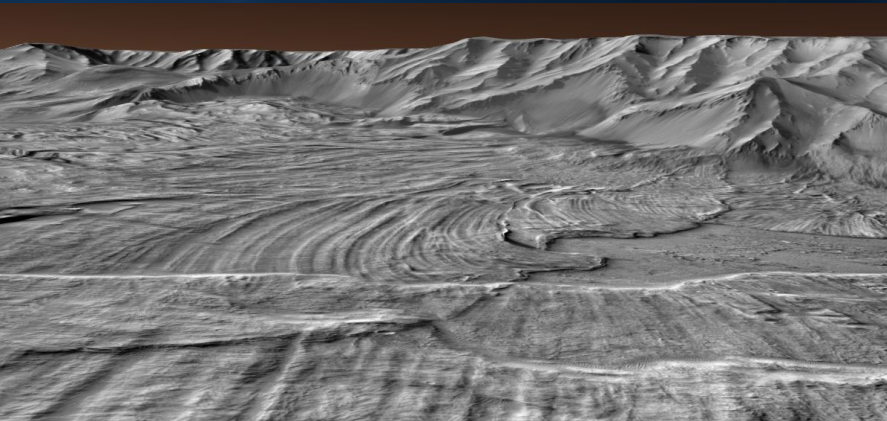
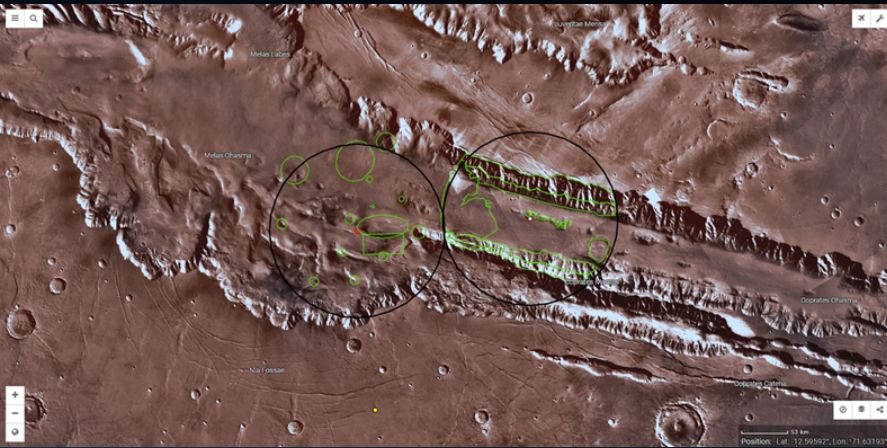


National Aeronautics and
Space Administration

SCIENCE MISSION DIRECTORATE

Emily Law/Brian Day
Mars Trek 3.0 Release

September 26, 2017



Mars Trek Version 3.0 Released

<https://marstrek.jpl.nasa.gov>

- Includes detailed views of the 47 proposed Exploration Zones being considered for human landing sites
- Features a new improved interface, new analysis tools (including crater detection subsetting, and slope), and new data layers (CRISM mineralogy, glacial landforms, and more).
- Showcased at the European Planetary Science Congress in Riga, and as a keynote at the Mars Exploration Congress in Mexico City.
- Makes it easy for anyone to gain a better understanding of what makes our targeted exploration sites so interesting, and conduct their own explorations of these zones.